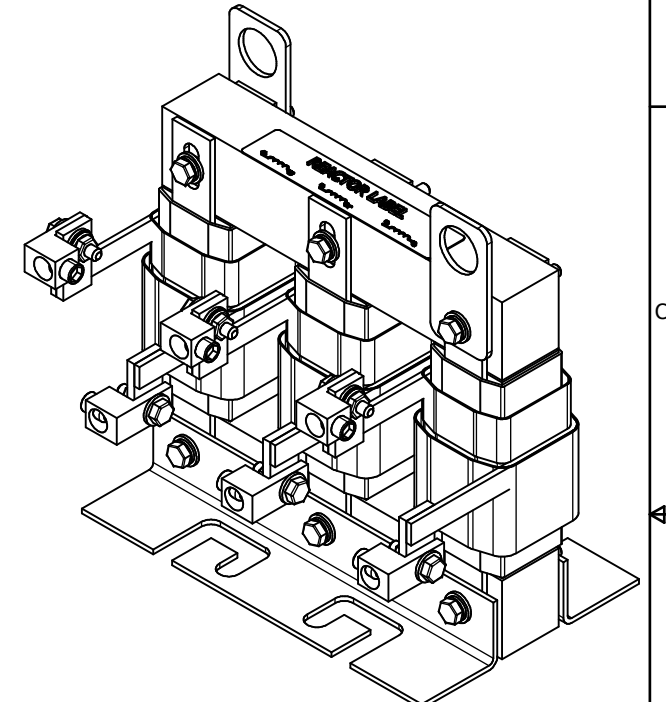
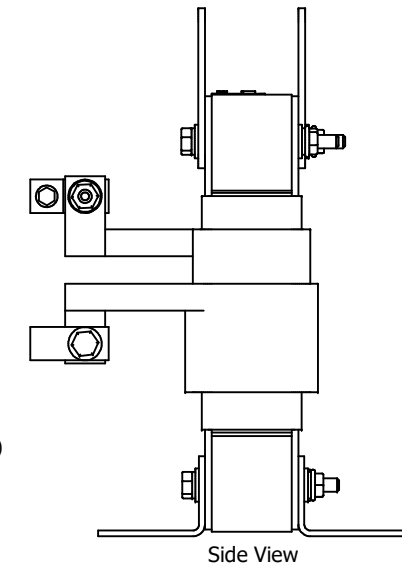
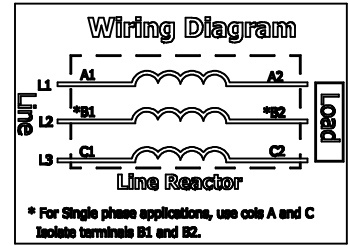


480 Rated Voltage, 600 Max Voltage, Output							
Part Number	Horsepower (HP)	Motor Amps (A)	Maximum Amps (A)	Inductance (uH)	Losses (W)	Weight (LBS)	Attached Lug Kit
KDRULH1P	100	124	130	80.2	115	31	LK10

575 Rated Voltage, 600 Max Voltage, Output							
Part Number	Horsepower (HP)	Motor Amps (A)	Maximum Amps (A)	Inductance (uH)	Losses (W)	Weight (LBS)	Attached Lug Kit
KDRULH31P	125	125	130	146	115	31	LK10



(Customer Connections) Markings On Coils For Reference Only.



TCL (800) 824-6282 transcoil.com

KDRUL Drive Reactor
 KDR - Motor Amps
 3PH, 50/60Hz, V Rated, 600V Max, -A Max
 40C Amb Max, 155C Rise, RoHS
 Manual #30895 LUG KIT #BLK-

UL LISTED CE
 250 CONT. 1P, 110V

DATE CODE A1 A2 B1 B2 C1 C2

- Note:
1. UL file number: cULus Listed File E116124.
 2. KDR Drive Reactors Comply With The Thermal and Altitude Standards Set Forth by NEMA ST20-1992.
 3. For Terminal Torques And Wire Size See, KDR IOM Manual, Part Number 30895
 4. NEC Current For 208/240 Volts, Horsepower Based On 208 Volts.
 5. Material(s) Shall be RoHS Compliant
 6. Customer Is Responsible For Installation To Meet All National And Local Electrical Codes.

THE INFORMATION AND DESIGNS CONTAINED IN THIS DRAWING ARE CONFIDENTIAL AND THE PROPRIETARY PROPERTY OF ALLIED MOTION TECHNOLOGIES INC. AND ITS SUBSIDIARIES. NEITHER THIS DESIGN NOR ANY INFORMATION CONTAINED IN THIS DRAWING MAY BE REPRODUCED OR DISCLOSED TO OTHERS WITHOUT THE EXPRESS WRITTEN CONSENT OF ALLIED MOTION TECHNOLOGIES INC. AND ITS SUBSIDIARIES.				TOLERANCES (EXCEPT AS NOTED) DECIMAL .XX ± .25 .XXX ± .10				W132N10611 (Rev 11/20) Germanstown, WI 53012 © 2024 TCL, LLC An Official Motors Company KDRULH Frame, Flag Version Reactor Drawing	
B	6535, Update Termination	1/16/2024	DSW	FRACTIONAL ± 1/32	DRN BY DSW	DATE 8/28/2023	107589-4DG		
A	6394 Was BUSBAR	8/28/2023	DSW	ANGULAR ± 1°	SCALE 1/2	DRN BY	107589-4DG		
NO	REVISION	DATE	BY				SHT 1 OF 1		